



pearson
ferrier®



8 RIVERBANK GARDENS 50 TOTTINGTON ROAD

Bury, BL8 1JY

£895 Per Calendar Month

8 RIVERBANK GARDENS 50 TOTTINGTON ROAD

Property at a glance

- PENTHOUSE APARTMENT
- TWO DOUBLE BEDROOMS
- IMMACULATE CONDITION
- UNFURNISHED
- AVAILABLE NOW
- WALKING DISTANCE TO BURY TOWN CENTRE

This impressive two-bedroom penthouse apartment is perfectly positioned on Tottington Road, within easy walking distance of Bury town centre. With shops, schools, and the beautiful Kirklees Nature Trail right on your doorstep, it's an ideal location for modern living.

Inside, the property features a welcoming entrance hall leading to a bright and spacious open-plan lounge, kitchen, and dining area. There are two well-proportioned double bedrooms and a contemporary family bathroom. An allocated parking space is also included.

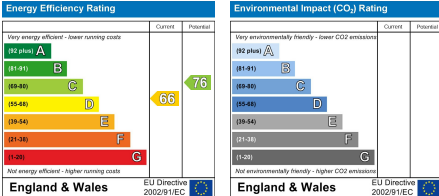
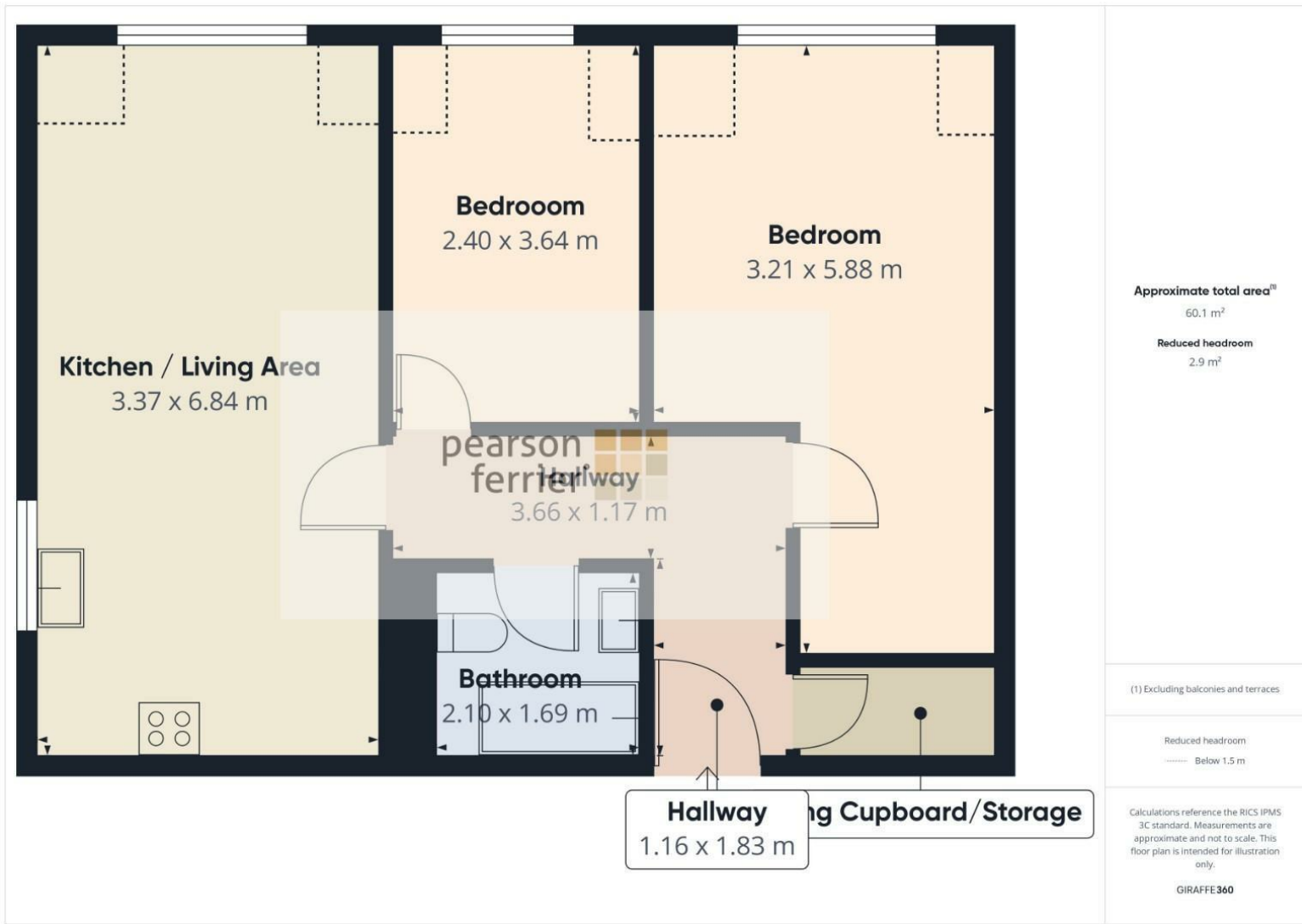
Additional information

Available now!

Council tax band A. EPC rating D. Please note that you will be required to pay a Holding Deposit equivalent to one weeks rent to secure the property.







Bury Office
 435/7 Walmsley Road, Bury, Lancashire, BL9 5EU
 Telephone: 0161 764 4440
 Fax: #
 Email: bury@pearsonferrier.co.uk

www.pearsonferrier.co.uk



All statements contained in these particulars are for indicative purposes only and are made without responsibility on the part of Pearson Ferrier and the vendors of this property and are not to be relied on as statements or representations of fact. Potential purchasers should satisfy themselves by inspection or otherwise as to the accuracy of such details contained in these particulars.